

ASSEMBLY INSTRUCTIONS

Decibel OD11 loudspeaker kits (2025)



Kit contents:

- 8 precision cut 19mm solid timber panels
- 4 x 19mm timber top and bottom panels
- 8 corner brace pieces of timber
- 4 6mm round spacers
- 2 grille frames
- 2 pieces grille cloth
- 2 gold plated speaker terminal blocks
- 16 black Philips head screws
- 2 pieces of Acoustic "wool"
- 2 x 6.5" co-axial drivers with crossovers
- 8 x rubber feet plus screws
- 4 x Velcro dots plus felt pads



Tools Required:

- PVA wood glue
- Ratchet straps or Clamps
- Philips head screwdriver
- 80 and 180 grade abrasive paper (power orbital sander makes it easier)
- Damp rags to clean up excess glue
- Hand or power drill with a 2mm drill bit for the screw holes
- Stapler or contact glue for grille cloth

Procedure:

1. Firstly check that you have all the components as listed above. Then have a read of all the instructions below so you have an idea of the sequence to follow.
2. Lay out the panels so that you understand how they fit together. The side panels are mitre cut so they fit together snugly. The pieces with the large hole are the tops. The ones with the smaller hole are the bottoms.
3. Put all the panels into their positions to confirm that they fit together properly.
4. Now spread a thin layer of glue on all edges of a bottom panel and place it on top of the 4 spacers.
5. Next spread a thin layer of glue onto the angled edges of the 4 side panels and stand them up alongside the back panel. Use clamps or a ratchet strap to hold them firmly in place
6. Run a bead of glue along the joins where the top of the bottom panel meets the sides.
7. Then glue in the 4 corner braces



8. Apply glue to the edges of the top panel and slip into the box so it rests on the 4 corner braces. Run a bead of glue along the joins where the top panel meets the sides.

9. When the glue has set, remove the clamps/strap and repeat steps 4 to 8 with the second set of panels.

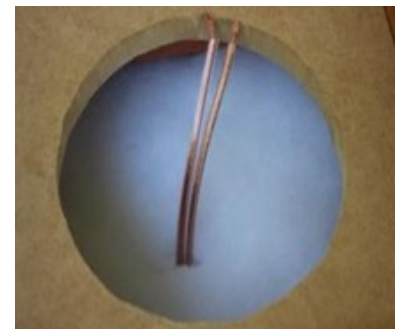
10. Inspect the panels to see which one you prefer to have as the front. Turn the box so the bottom is facing up and fit the input terminal. It doesn't matter much what the orientation is but I usually have the terminal posts closest to the back of the cabinet. Put the terminal block into position and drill four pilot holes into the MDF through the holes in the terminal block. Fix with the four short screws provided.



11. While upside down you can fit the four rubber feet into the corners with the screws provided. You'll need to drill pilot holes for each of those also.



12. Now turn the cabinets over. You'll see the back of the terminal block at the bottom with its two wires. Position the acoustic wool around the wires. You'll finish up with a situation as in the photo.



13. Now attach the wires to the spring terminals on the crossover. Make sure the wire with the black stripe goes into the black spring terminal.



14. Push the crossover to one side and sit the driver into the hole. Drill pilot holes and fix the driver with the four screws provided. Push the tweeter towards one of the front corners. The tweeter on the other cabinet should be angled towards the other front corner. So you'll finish up with the speaker that is going to be on the left side with its tweeter facing in towards the centre of the listening area, and vice versa.



15. Lay the piece of grille cloth on a flat surface and place the grille frame on top of it. Use a stapler or contact adhesive to fix the cloth to the frame. The material is slightly stretchy so pull it to eliminate any wrinkles. Pay particular attention to the corners, folding the multiple layers to be as flat as possible. The grilles are held gently in place with Velcro dots. Only two pairs are needed for each grille - use the supplied felt pads to raise the dots on the cabinet so that they grip the dots on the grilles.



16. At this point your speaker enclosure is finished except for the fact that the timber is unfinished. I applied three coats of satin enamel to the prototypes which gave a very nice finish, but Danish oil or stains can also be used.

17. All you need to do now is hook them up and enjoy your music. Amplifiers from 10 watts upwards are suitable.